

# AUCKLAND INTERNATIONAL AIRPORT

## AKL

### S15 Start of Season Report (International Traffic)

Key Statistics	S14 Operated	S15 -Season Start	Percentage Change
Air Transport Movements	26,429	26,623	▲ 0.7%
Total Seats	5,948,852	6,091,749	▲ 2.4%
Seats per Passenger ATM	225	229	

#### Contents

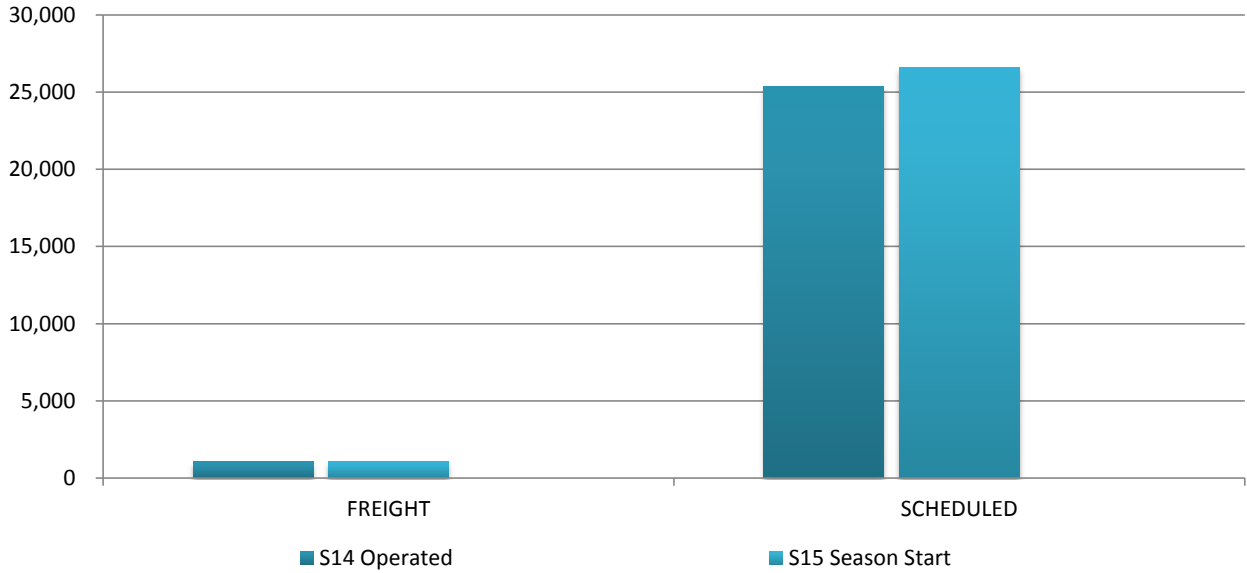
	Page
Movements and Seats by Service Type	2
Peak Week Departure Frequencies by Carrier	3-5
Top 10 Airlines by ATM's and Seats	6
Top 20 Destinations by ATM's and Seats	7
International Terminal - Passengers per 60 Minutes	8-9
International Arrivals - Passengers per 30 Minutes	10
Glossary	11

Data in this report is current as of 19 March 2015

No warranty whether expressed or implied as to the completeness, accuracy, fitness for purpose, or satisfactory quality is given by ACL regarding the information in this report, which is provided by third parties. Accordingly, ACL excludes all liability with regard to such data.

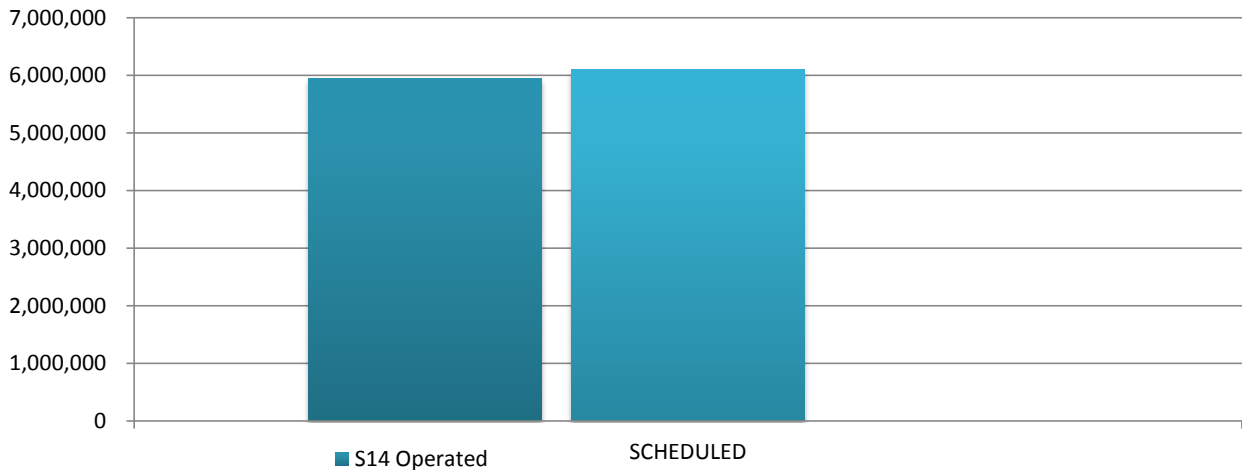
The contents of this report may not be reproduced without the written consent of ACL.

## Full Season ATMs by Service Type



	S14 Operated	S15 Season Start	% CHANGE S14 End vs S15 Season Start
<b>FREIGHT</b>	1,043	1,070	▲ 2.6%
<b>SCHEDULED</b>	25,386	26,623	▲ 4.9%
<b>TOTAL</b>	<b>26,429</b>	<b>27,693</b>	▲ 4.8%

## Full Season Seats by Service Type



	S14 Operated	S15 Season Start	% CHANGE S14 End vs S15 Season Start
<b>SCHEDULED</b>	5,948,852	6,091,749	▲ 2.4%
<b>TOTAL</b>	<b>5,948,852</b>	<b>6,091,749</b>	▲ 2.4%

## AUCKLAND INTERNATIONAL AIRPORT

### PEAK WEEK DEPARTURE FREQUENCIES - BY CARRIER

	OPERATOR	AIRPORT		S14		S15		SEATS +/-	ATMS +/-
				SEATS	ATMS	SEATS	ATMS		
CI	China Airlines	TPE	Taipei Chiang Kai Shek	1,842	6	1,842	6	0	0
CI Total				1,842	6	1,842	6	0	0
CX	Cathay Pacific	HKG	Hong Kong Int'L	1,981	7	1,855	7	-126	0
CX Total				1,981	7	1,855	7	-126	0
CZ	China Southern Airlines	CAN	Guangzhou Baiyun	2,280	10	2,247	10	-33	0
CZ Total				2,280	10	2,247	10	-33	0
EK	Emirates	DXB	Dubai	10,269	21	10,269	21	0	0
EK Total				10,269	21	10,269	21	0	0
FJ	Air Pacific	NAN	Nadi International	2,060	12	1,951	12	-109	0
		SUV	Nausori International Airport	244	2	244	2	0	0
FJ Total				2,304	14	2,195	14	-109	0
FX	Fedex	CAN	Guangzhou Baiyun	0	1	0	1	0	0
FX Total				0	1	0	1	0	0
HA	Hawaiian Airlines	HNL	Honolulu International	882	3	882	3	0	0
HA Total				882	3	882	3	0	0
HJ	Tasman Pacific	SYD	Sydney Kingsford Smith	0	5	0	5	0	0
HJ Total				0	5	0	5	0	0
JQ	Jetstar	ADL	Adelaide	531	3	0	0	-531	-3
		MEL	Melbourne	1,239	7	2,340	13	1,101	6
		OOL	Gold Coast Coolangatta	1,239	7	1,251	7	12	0
		SIN	Singapore Changi	909	3	0	0	-909	-3
		SYD	Sydney Kingsford Smith	1,239	7	1,431	8	192	1
JQ Total				5,157	27	5,022	28	-135	1
KE	Korean Air	ICN	Seoul Incheon Intl	1,044	4	1,044	4	0	0
KE Total				1,044	4	1,044	4	0	0
LA	Lan Airlines	SCL	Santiago Arturo Merino Benitez	1,820	7	1,729	7	-91	0
		SYD	Sydney Kingsford Smith	1,820	7	1,729	7	-91	0
LA Total				3,640	14	3,458	14	-182	0
MH	Malaysia Airlines	KUL	Kuala Lumpur Int'L	1,974	7	1,974	7	0	0
MH Total				1,974	7	1,974	7	0	0
NF	Air Vanuatu	VLJ	Vanuatu	340	2	340	2	0	0
NF Total				340	2	340	2	0	0

## AUCKLAND INTERNATIONAL AIRPORT

### PEAK WEEK DEPARTURE FREQUENCIES - BY CARRIER

	OPERATOR	AIRPORT		S14		S15		SEATS +/-	ATMS +/-
				SEATS	ATMS	SEATS	ATMS		
NZ	Air New Zealand	ADL	Adelaide	840	5	840	5	0	0
		APW	Apia Faleolo	1,410	8	1,416	6	6	-2
		BNE	Brisbane International	3,680	14	4,172	15	492	1
		CNS	Cairns	840	5	972	5	132	0
		DPS	Denpasar Bali Ngurah Rai	702	3	468	2	-234	-1
		HKG	Hong Kong Int'L	2,128	7	2,128	7	0	0
		HNL	Honolulu International	1,170	5	1,170	5	0	0
		IUE	Niue International Airport	336	2	336	2	0	0
		LAX	Los Angeles International	2,862	9	3,470	11	608	2
		LHR	London Heathrow	2,324	7	2,324	7	0	0
		MCY	Sunshine Coast Airport	504	3	504	3	0	0
		MEL	Melbourne	4,508	20	5,214	23	706	3
		NAN	Nadi International	3,056	13	3,500	14	444	1
		NLK	Norfolk Island Airport	168	1	168	1	0	0
		NOU	Noumea	336	2	504	3	168	1
		NRT	Tokyo Narita	1,988	7	1,842	7	-146	0
		OOL	Gold Coast Coolangatta	1,176	7	1,176	7	0	0
		PER	Perth	2,128	7	2,114	7	-14	0
		PPT	Papeete Faaa	702	3	702	3	0	0
		PVG	Shanghai Pu Dong	1,848	7	2,118	7	270	0
RAR	Rarotonga	2,622	11	2,024	8	-598	-3		
SFO	San Francisco International	2,484	7	2,296	7	-188	0		
SIN	Singapore Changi	0	0	2,128	7	2,128	7		
SYD	Sydney Kingsford Smith	7,040	33	7,448	34	408	1		
TBU	Nuku'Alofa Fua'Amotu Internationa	1,140	6	1,308	7	168	1		
VLI	Vanuatu	504	3	672	4	168	1		
YVR	Vancouver	1,520	5	1,520	5	0	0		
<b>NZ Total</b>				<b>48,016</b>	<b>200</b>	<b>52,534</b>	<b>212</b>	<b>4,518</b>	<b>12</b>
QF	Qantas	BNE	Brisbane International	2,352	14	2,184	13	-168	-1
		CNS	Cairns	0	1	0	1	0	0
		MEL	Melbourne	3,528	21	3,528	21	0	0
		SYD	Sydney Kingsford Smith	5,880	41	4,368	32	-1,512	-9

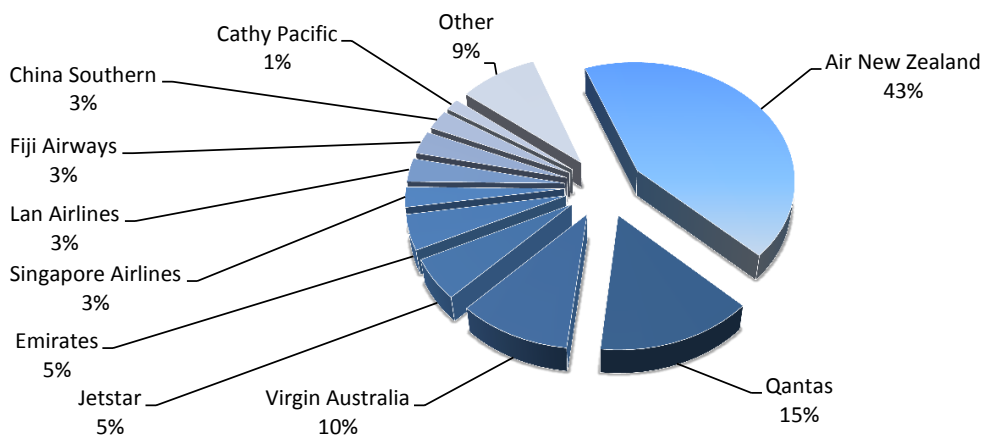
## AUCKLAND INTERNATIONAL AIRPORT

### PEAK WEEK DEPARTURE FREQUENCIES - BY CARRIER

OPERATOR		AIRPORT		S14		S15		SEATS +/-	ATMS +/-
				SEATS	ATMS	SEATS	ATMS		
<b>QF Total</b>				11,760	77	10,080	67	-1,680	-10
<b>SB</b>	Aircalin Air Caledonie Int	NOU	Noumea	412	2	474	3	62	1
<b>SB Total</b>				412	2	474	3	62	1
<b>SQ</b>	Singapore Airlines	HKG	Hong Kong Int'L	0	2	0	0	0	-2
		SIN	Singapore Changi	3,371	15	1,946	12	-1,425	-3
<b>SQ Total</b>				3,371	17	1,946	12	-1,425	-5
<b>TG</b>	Thai Airways International Public Lt	BKK	Bangkok International	1,168	4	1,168	4	0	0
<b>TG Total</b>				1,168	4	1,168	4	0	0
<b>TN</b>	Air Tahiti Nui	LAX	Los Angeles International	882	3	882	3	0	0
<b>TN Total</b>				882	3	882	3	0	0
<b>VA</b>	Virgin Australia	APW	Apia Faleolo	1,232	7	1,232	7	0	0
		BNE	Brisbane International	2,464	14	2,464	14	0	0
		MEL	Melbourne	1,232	7	1,232	7	0	0
		OOL	Gold Coast Coolangatta	1,232	7	1,232	7	0	0
		RAR	Rarotonga	880	5	704	4	-176	-1
		SYD	Sydney Kingsford Smith	1,232	7	1,232	7	0	0
		TBU	Nuku'Alofa Fua'Amotu Internationa	352	2	352	2	0	0
<b>VA Total</b>				8,624	49	8,448	48	-176	-1

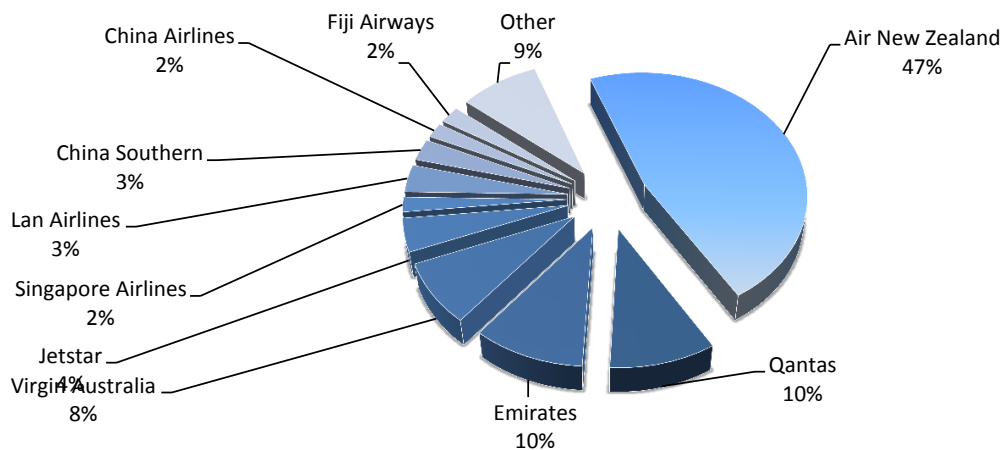
## Top 10 Airlines by Air Transport Movements (ATMs)

Airline	Movements
Air New Zealand	11,360
Qantas	3,890
Virgin Australia	2,807
Jetstar	1,474
Emirates	1,260
Singapore Airlines	720
Lan Airlines	840
Fiji Airways	823
China Southern	698
Cathy Pacific	420
Other	2,331

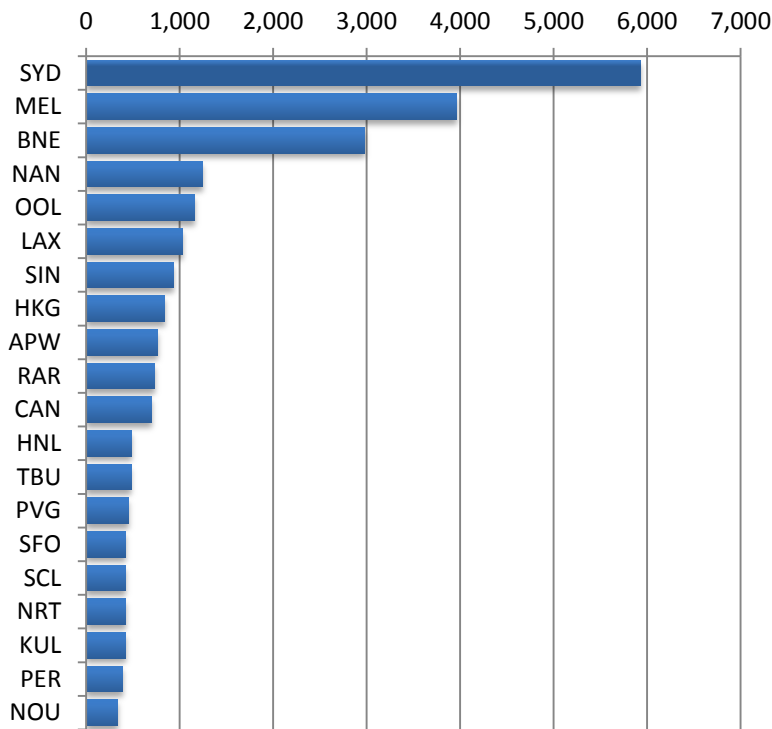


## Top 10 Airlines by Air Seats

Airline	Seats
Air New Zealand	2,849,774
Qantas	584,570
Emirates	616,140
Virgin Australia	494,032
Jetstar	264,351
Singapore Airlines	116,953
Lan Airlines	217,470
China Southern	170,140
China Airlines	118,140
Fiji Airways	134,891
Other	525,288



## Air Transport Top 20 Movements by Destination



Destination	ATM'S
SYD	5,930
MEL	3,965
BNE	2,978
NAN	1,244
OOL	1,164
LAX	1,034
SIN	930
HKG	840
APW	764
RAR	736
CAN	698
HNL	485
TBU	481
PVG	451
SFO	420
SCL	420
NRT	419
KUL	419
PER	390
NOU	334

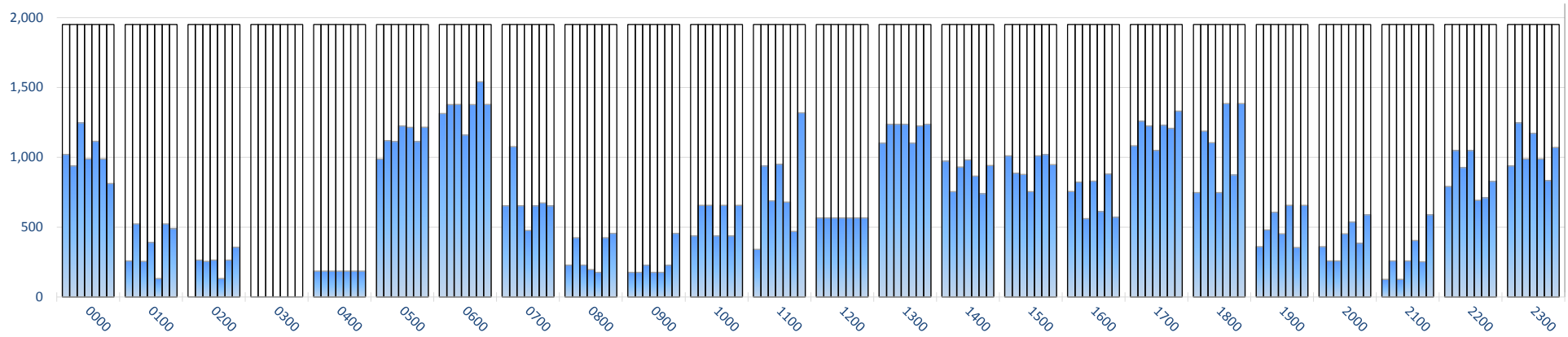
## Air Transport Top 20 Seats by Destination



Destination	SEATS
SYD	1,188,371
MEL	869,029
BNE	751,090
LAX	337,604
NAN	275,671
SIN	244,329
HKG	238,676
OOL	203,238
CAN	170,140
RAR	169,392
APW	143,300
SFO	137,872
PVG	135,110
NRT	119,738
KUL	118,158
PER	116,842
HNL	110,250
SCL	108,735
TBU	86,652
PPT	84,216

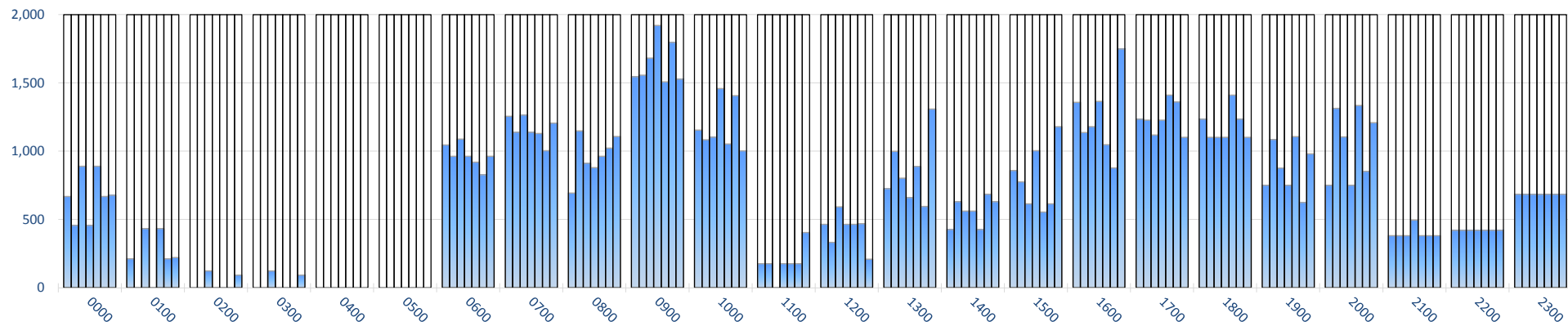
### INTERNATIONAL TERMINAL ARRIVALS (PER 60 MINUTES, ROLLING EVERY 5 MINUTES)

Peak Week Movements per Hour - All times LOCAL



### INTERNATIONAL TERMINAL DEPARTURES (PER 60 MINUTES, ROLLING EVERY 5 MINUTES)

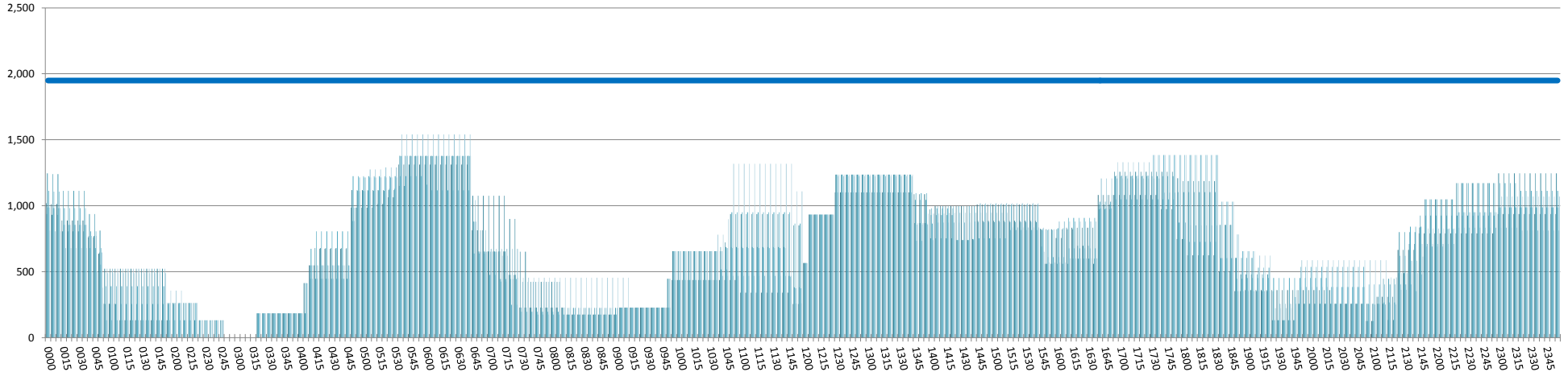
Peak Week Movements per Hour - All times LOCAL





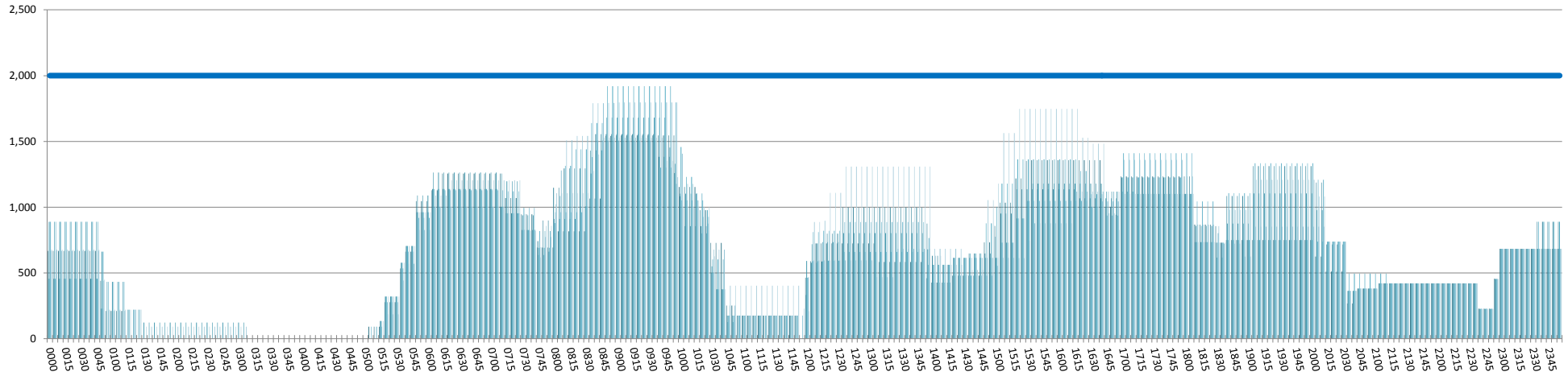
### INTERNATIONAL TERMINAL ARRIVALS (PER 60 MINUTES, ROLLING EVERY 5 MINUTES)

Peak Week Movements per Hour - All times LOCAL



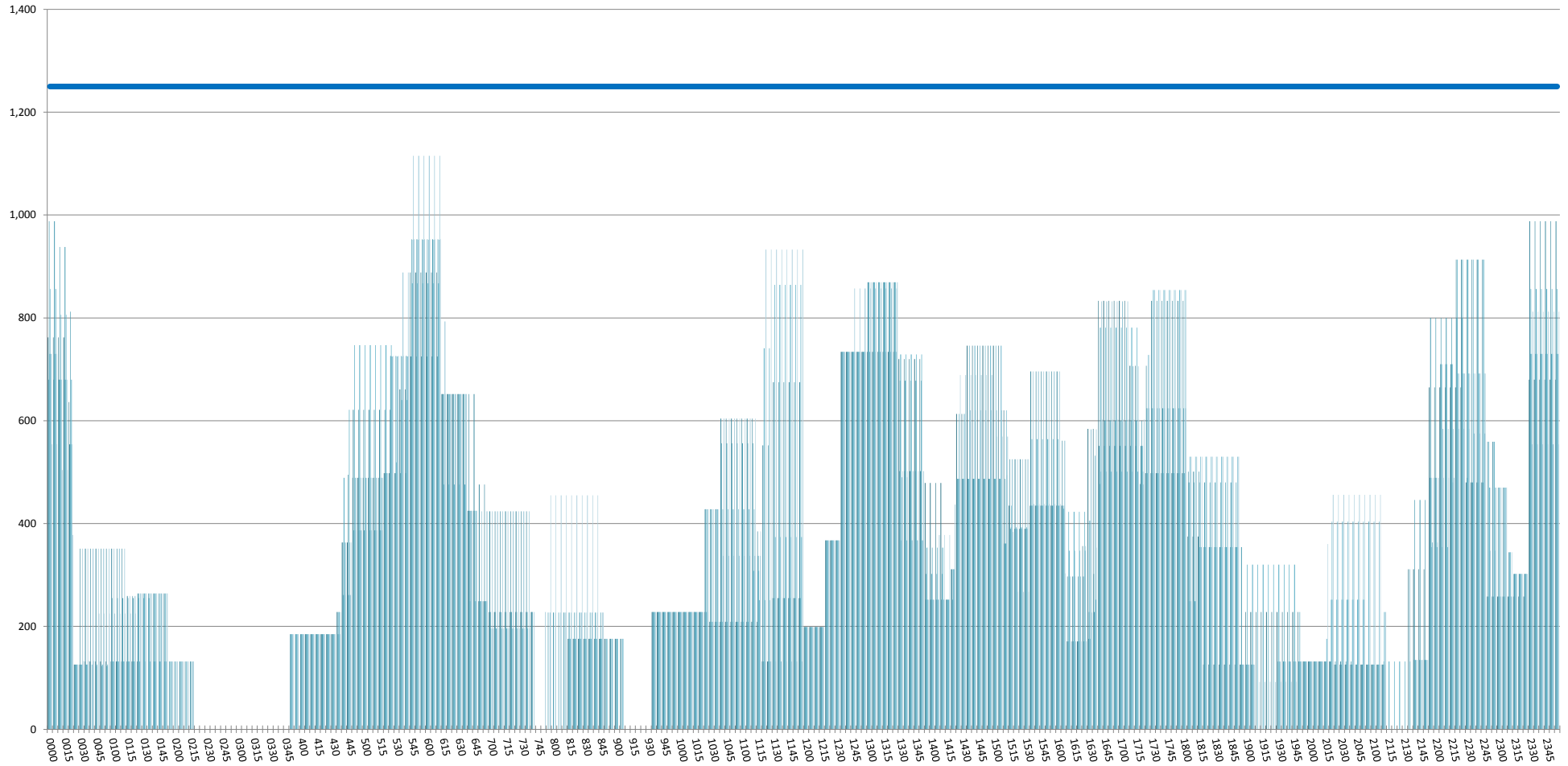
### INTERNATIONAL TERMINAL DEPARTURES (PER 60 MINUTES, ROLLING EVERY 5 MINUTES)

Peak Week Movements per Hour - All times LOCAL



# INTERNATIONAL TERMINAL ARRIVALS (PER 30 MINUTES, ROLLING EVERY 5 MINUTES)

Peak Week Movements - All times LOCAL



## GLOSSARY OF TERMS

---

<b>Air Transport Movement (ATM)</b>	A scheduled or charter passenger or freight aircraft movement.
<b>Allocation</b>	The allocation of slots such that demand is constrained to fit within declared scheduling limits.
<b>Common Travel Area (CTA)</b>	Services to or from the Republic of Ireland and the Channel Islands.
<b>Demand</b>	The unconstrained demand for slots, prior to any schedule adjustments.
<b>Passenger ATM</b>	A scheduled or charter <u>passenger</u> aircraft movement (ie, excluding all-cargo aircraft movements).
<b>Scheduling Limits</b>	Limiting parameters declared by the Airport Operator used in the coordination process.
<b>Seats</b>	The number of seats based on the aircraft configuration advised by the airline.
<b>Peak Week</b>	The Peak Week for S15 is 13-19 July 2015
<b>Data Snapshot</b>	All data used for this report was as held 19 March 2015

### GUIDE TO HISTOGRAMS

---

The histograms show the pattern of traffic by time of day against the appropriate scheduling limit. Each time period consist of seven columns representing the days-of-week, Monday through Sunday.